

GENERAL CHARACTERISTICS AND ROHS INFORMATIONS

See **PRODUCT SPECIFICATION : 6S-12-447**

NOTES:

1. FOR LOADING PATTERNS SEE SHEET 2
2. FLAT ROCK PRODUCT ,NO SPECIFIC TOOL NEEDED FOR PRESS-FIT INSERTION
3. PRESS-FIT : Baby H shape
4. TUBE PACKAGING

X	PLATING CONTACT AREA:
1	STANDARD PLATING See Prod. Spec 6S-12-447
2 - 3	CUSTOMER SPECIAL PLATINGS

Tin Lead P/N

85761-XYZZ

Lead Free P/N

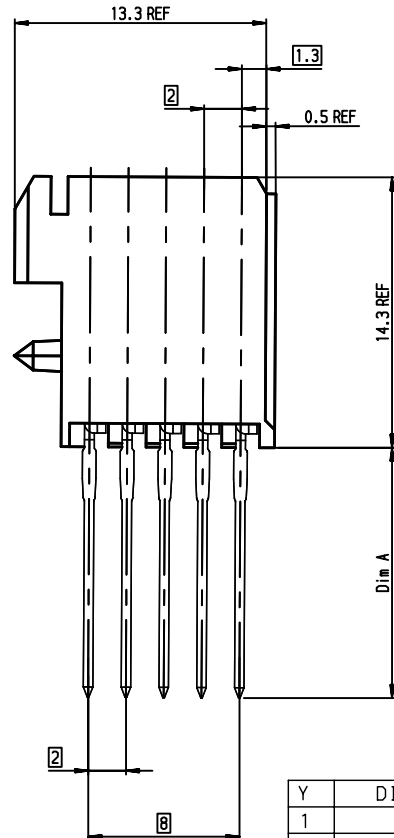
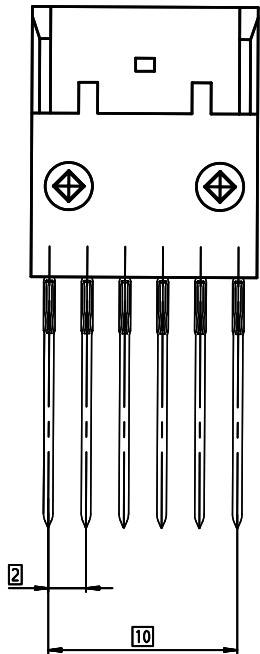
85761-XYZZLF

With :

X : Plating dash number

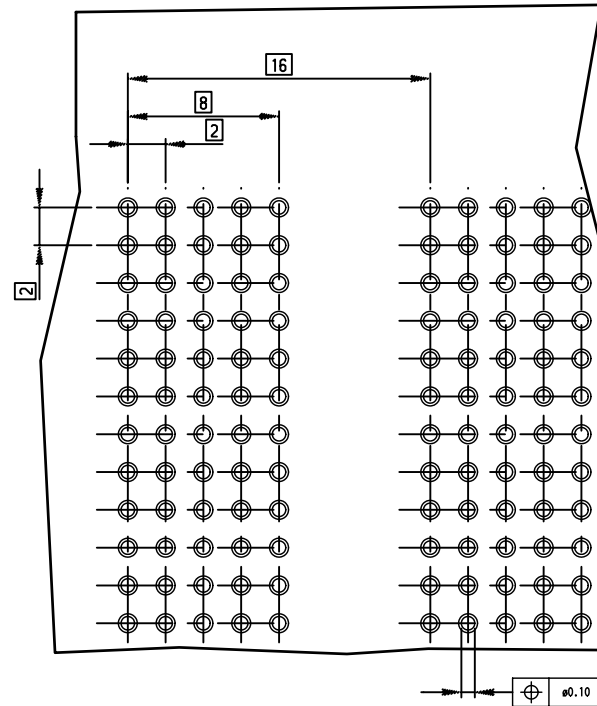
Y : Termination dash number

ZZ: Loading pattern number



Y	DIM A
1	4.3
2	13.6
3	17.1

COMPONENT SIDE



Copyright FCI.

rev	ecn no	dr	date
M	-	MLE	1997/05/20
N	LS05-0056	MLE	2005/06/20
P	LS05-0070	LGO	2005/09/01
R	LS05-0070	LGO	2005/10/20
S	LS06-0097	LGO	2006/07/08
T	LS07-0142	MLE	2007/05/22

www.fciconnect.com		surface ISO 1302	tolerance std ISO 406 ISO 1101	projection mm
Dr LENOIR 1997/05/20		TOLERANCES UNLESS OTHERWISE SPECIFIED		size A2
Eng LENOIR 1997/05/20		ANGULAR	0.x ±0.1	Scale 1:1
Chr LEGARE 1997/05/20		LINEAR	0.xx ±0.1	ECN LS07-0142
Appr LEGARE 1997/05/20		0.xx' ±2'	0.xxx ±0.1	Product family METRAL Spec ref -
Title METRAL RCP STR PFIT 5rows		Product family METRAL		Rev. T
5x6 SIGNAL - Flat rock		Part no C-85761-01		sheet 1 of 2
catalog no -		CUSTOMER		Printed: May 25, 2007

PDM: Rev.T

STATUS: Released

Printed: May 25, 2007

PART NUMBER	CONFIGURATION						
	POS	6	5	4	3	2	1
85761-XY01 OR 85761-XY01LF	E	X	X	X	X	X	X
	D	X	X	X	X	X	X
	C	X	X	X	X	X	X
	B	X	X	X	X	X	X
85761-XY02 OR 85761-XY02LF	A	X	X	X	X	X	X
	E	X	-	X	X	-	X
	D	-	-	X	X	-	-
	C	X	X	X	X	X	X
85761-XY03 OR 85761-XY03LF	B	-	-	X	X	-	-
	A	X	-	X	X	-	X
	E	X	X	X	X	X	X
	D	X	X	X	X	X	X
85761-XY04 OR 85761-XY04LF	C	X	X	X	X	X	X
	B	X	X	X	-	X	X
	A	X	X	X	X	X	X
	E				X		
85761-XY05 OR 85761-XY05LF	D				X		
	C				X		
	B		X				
	A		X				
85761-XY06 OR 85761-XY06LF	E	X					
	D	X					
	C	X					
	B	X					
85761-XY07 OR 85761-XY07LF	A	X					
	E	X				X	
	D	X				X	
	C	X				X	
85761-XY08 OR 85761-XY08LF	B	X				X	
	A	X				X	
	E	X				X	
	D	X				X	
85761-XY09 OR 85761-XY09LF	C	X				X	
	B	X				X	
	A	X				X	
	E	X		X			
85761-XY10 OR 85761-XY10LF	D	X		X			
	C	X		X			
	B	X		X			
	A	X		X			

PART NUMBER	CONFIGURATION						
	POS	6	5	4	3	2	1
85761-XY11 OR 85761-XY11LF	E			X	X	X	X
	D			X	X	X	X
	C			X	X	X	X
	B			X	X	X	X
85761-XY12 OR 85761-XY12LF	A			X	X	X	X
	E	X	X	X	X		
	D	X	X	X	X		
	C	X	X	X	X		
85761-XY13 OR 85761-XY13LF	B	X	X	X	X		
	A	X	X	X	X		
	E	X	X			X	X
	D	X	X			X	X
85761-XY14 OR 85761-XY14LF	C	X	X			X	X
	B	X	X			X	X
	A	X	X			X	X
	E			X	X	X	X
85761-XY15 OR 85761-XY15LF	D			X	X	X	X
	C	X				X	
	B		X				X
	A	X					X
85761-XY16 OR 85761-XY16LF	E					X	
	D					X	
	C					X	
	B					X	
85761-XY17 OR 85761-XY17LF	A					X	
	E			X	X		
	D			X	X		
	C			X	X		
85761-XY18 OR 85761-XY18LF	B			X	X		
	A			X	X		
	E			X	X		
	D			X	X		
85761-XY19 OR 85761-XY19LF	C			X	X		
	B			X	X		
	A			X	X		
	E	X					
85761-XY20 OR 85761-XY20LF	D	X					
	C	X					
	B		X				
	A	X					

PART NUMBER	CONFIGURATION						
	POS	6	5	4	3	2	1
85761-XY21 OR 85761-XY21LF	E	X			X		
	D	X		X	X		
	C	X			X		
	B	X		X	X		
85761-XY22 OR 85761-XY22LF	A	X		X	X		
	E	X			X	X	X
	D	X			X	X	X
	C	X			X	X	X
85761-XY23 OR 85761-XY23LF	B	X			X	X	
	A	X			X	X	
	E	X			X	X	
	D	X			X	X	
85761-XY24 OR 85761-XY24LF	C	X			X	X	
	B	X			X	X	
	A	X			X	X	
	E	X	X			X	
85761-X025 OR 85761-X025LF	D	X	X			X	
	C	X	X			X	
	B	X	X			X	
	A	X	X			X	
85761-XY26 OR 85761-XY26LF	E	X	X	X	X	X	X
	D	X	X	X	X	X	X
	C	X	X	X	X	X	X
	B	X	X	X	X	X	X
	A	X	X	X	X	X	X
	E						
	D						
	C						
	B						
	A						
	E						
	D						
	C						
	B						
	A						
	E						
	D						
	C						
	B						
	A						

NOTE:
 1 WHEN "X" IN TABLES : SELECTIVE LOADING OR NOT WITH ONLY ONE CONTACT RPU LENGTH
 WHEN "1" or "2" or "3" IN TABLES : SELECTIVE LOADING OR NOT BUT WITH DIFFERENT RPU LENGTH
 "1" or "2" or "3" INDICATES THE CONTACT TYPE (TERMINATION LENGTH)
 2 CUSTOMER RESPONSIBILITY FOR GOOD ALIGNMENT AND RETENTION ON BOARD

rev	ecn no	dr	date
J	-	MLE	1997/05/20
N	LS05-0056	MLE	2005/06/20
P	LS05-0076	LGO	2005/09/01
R	LS05-0070	LGO	2005/10/20
S	LS06-0097	LGO	2006/07/08
T	LS07-0142	MLE	2007/05/22

www.fciconnect.com		surface ISO 1302	tolerance std ISO 406 ISO 1101	projection mm
Dr LENOIR 1997/05/20		TOLERANCES UNLESS OTHERWISE SPECIFIED		size A2
Eng LENOIR 1997/05/20		ANGULAR	0.X ±0.1	Scale 1
Chr LEGARE 1997/05/20		LINEAR	0.XX ±0.1	ECN LS07-0142
Appr LEGARE 1997/05/20		Product Family	METRAL	Spec ref -
Title METRAL RCP STR PFIT 5rows		Rev. T		Rev. T
catalog no		C-85761-02		sheet 2 of 2

